



FORMATION EVALUATION LOG

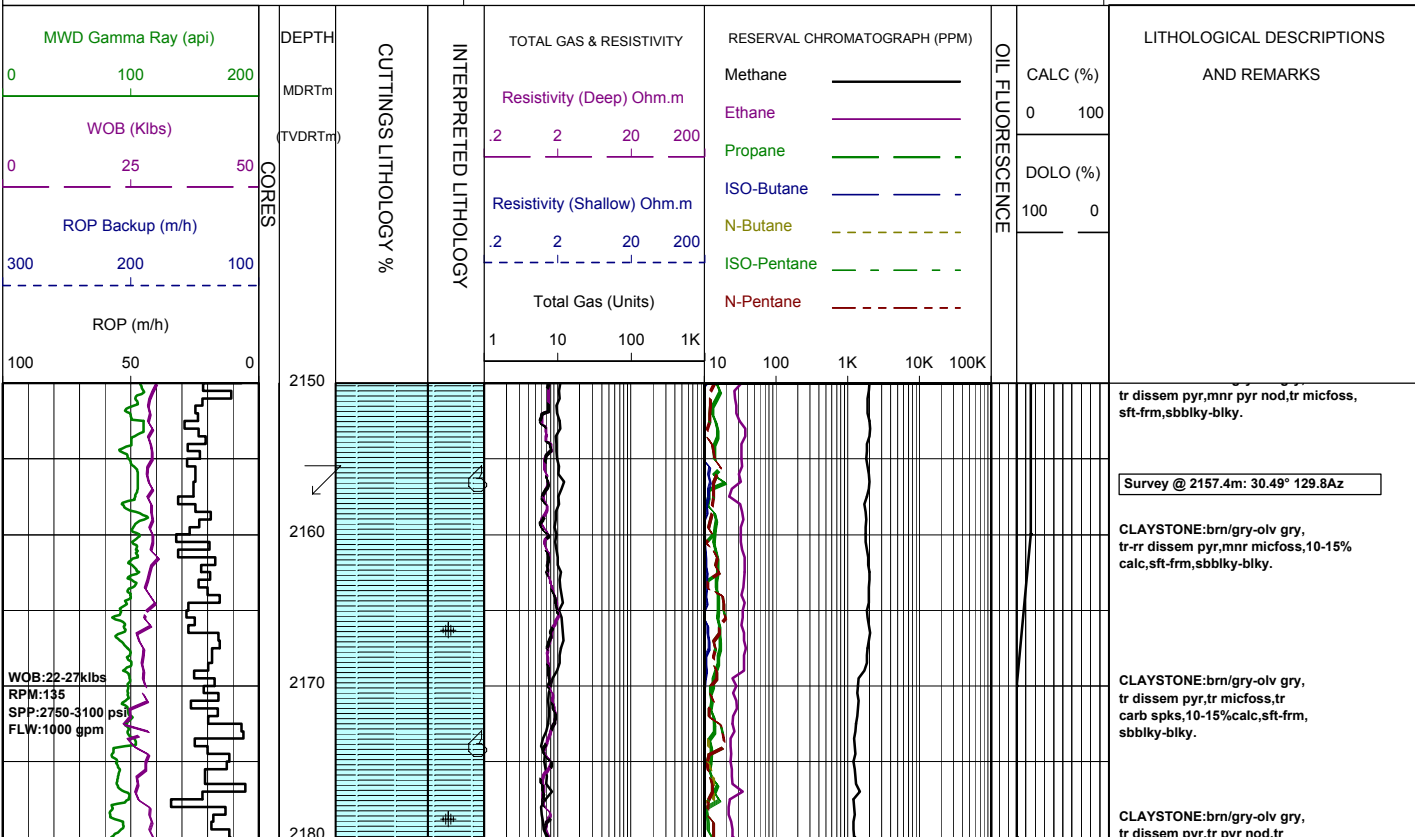


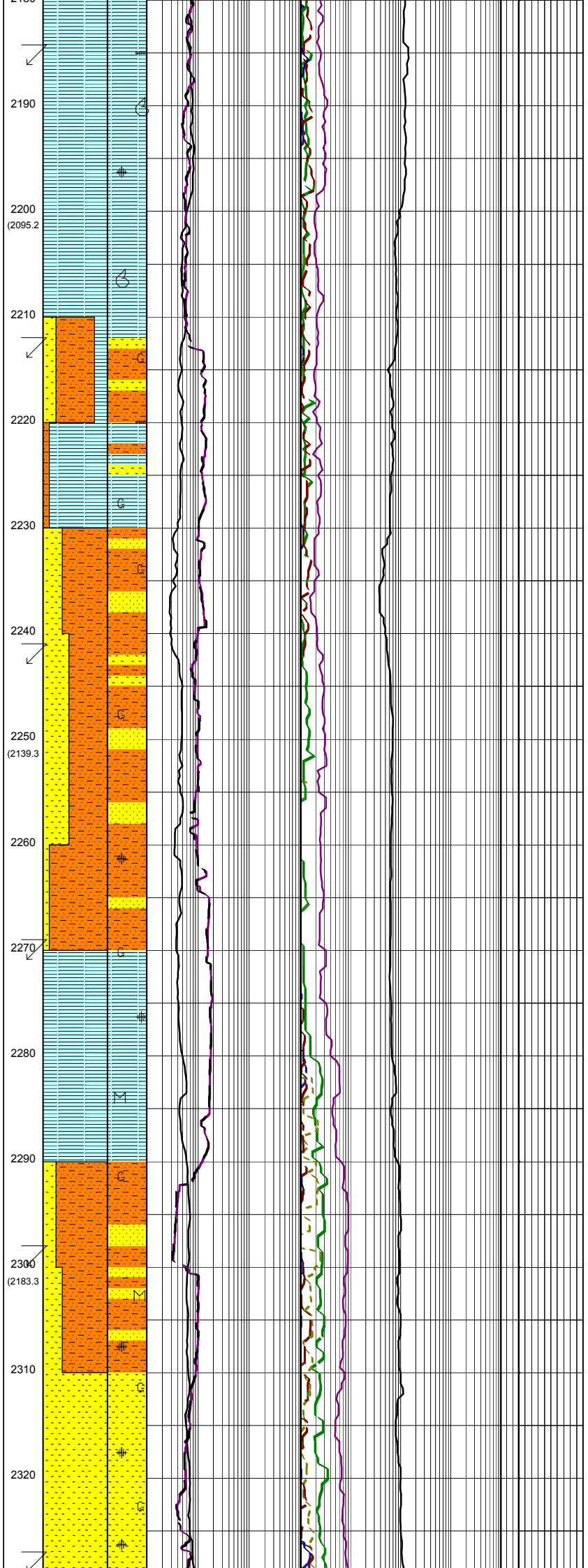
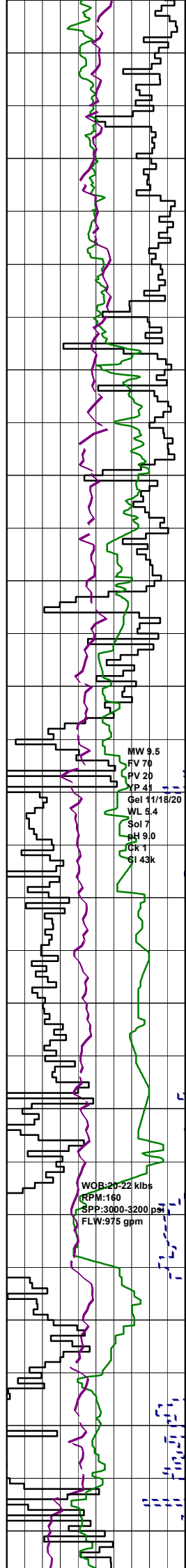
WELL : BASKER-5

FROM (m): 2150 TO (m): 2950 SCALE: 1/ 500

POSITION		HOLE / CASING INFO	
Country : AUSTRALIA	Latitude : 38°17'59.31"S	17 1/2" Hole to (mMDRT) : 1012m	Spud Date : 26-02-2006
Basin : GIPPSLAND	Longitude : 148°42'23.80"E	12 1/4" Hole to (mMDRT) : xxxm	Total Depth Date : xx-xx-2006
Field : BASKER	UTM Co-ord X (m E) : 650106.2	8 1/2" Hole to (mMDRT) : 3357m	Total Depth (mRT) : 3357m
Permit : VIC/L26	UTM Co-ord Y (m N) : 5761989.6	13 3/8" Shoe at (mMDRT) : 1001.3m	T.V.D. (mSS MSL) : 3072m
Well Type : DEVELOPMENT	RT-LAT (m) : 21.5	9 5/8" Shoe at (mMDRT) : xxx.xm	Status :
Rig Name : OCEAN PATRIOT	RT-Seabed (m) : 175.1	7" Shoe at (mMDRT) : xxxm	

ABBREVIATIONS	LITHOLOGY LEGEND	ENGINEERING LEGEND
MW MUD WEIGHT FV FUNNEL VISCOSITY PV PLASTIC VISCOSITY YP YIELD POINT FC FILTER CAKE SOL SOLIDS WL FILTRATE SD SAND - % S SALINITY - PPM RM MUD RESISTIVITY RMF MUD FILTRATE C CARBIDE TEST LAT LOGGED AFTER TRIP DS DEVIATION SURVEY	NB NEW BIT RR RERUN BIT CB CORE BIT WOB WEIGHT ON BIT RPM REVS PER MINUTE FLC FLOW CHECK CR CIRCULATE RETURNS PR POOR RETURNS NR NO RETURNS BG BACKGROUND GAS TG TRIP GAS STG SHORT TRIP GAS CG CONNECTION GAS SG SWAB GAS SVG SURVEY GAS	Shoe FIT Mud loss Deviation survey DST Mud gain Test Sidewall Core Core RFT
	Claystone Siltstone ar. Silt ar Fine SST Medium SST Coarse SST Marl Clay, Limestone Limestone Dolomite Coal Gypsum Lithic Fragment Foraminifera Fossils Bryozoa Brachiopoda Cement Sponges Glauconite Pyrite Iron Minerals Mica Carb Fragments	





micfoss, mnr carb spks, tr calc, sft-frm, sbbiky-sbfiss.

Survey @ 2186.1m: 29.68° 128.9Az

CLAYSTONE: brn/gry-olv gry, tr dissem pyr, tr carb lams, mnr carb spks, tr calc, sft-frm, sbbiky-sbfiss.

CLAYSTONE: brn/gry-olv gry, tr dissem pyr, tr carb spks, tr calc, tr micfoss, sft-frm, sbbiky-blky.

CLAYSTONE: brn/gry-olv gry, tr dissem pyr, tr calc, tr micfoss, sft-frm, sbbiky-sbfiss tr blky.

Survey @ 2214.3m: 27.97° 129.8Az

SANDSTONE: clr-lt yel, crs-f, tr v crs, pr srt, sbrnd-sbang, tr ang, pr inf por, no fluor.

ARGILLACEOUS SILTSTONE: orgn brn-yel brn, tr calc, tr glauc, sft-frm, sbbiky-blky.

SILTY CLAYSTONE: orgn brn-yel brn, tr calc, tr glauc, tr carb spks, sft-v sft, occ disp, sbbiky-blky, occ amor.

ARGILLACEOUS SILTSTONE: grn/brn-gry/brn, com glauc, v sft-frm, occ disp, blky-sbbiky, occ amor.

Survey @ 2242.7m: 27.61° 129.6Az

SANDSTONE: clr-opq, med-vf, pr srt, sbang-sbrnd, com glauc, lse, pr inf por, no fluor.

ARGILLACEOUS SILTSTONE: grn/brn-gry/brn, com glauc, sft-disp, blky-amor.

ARGILLACEOUS SILTSTONE: grn/brn-gry/brn, com glauc, tr-rr dissem pyr, sft-disp, blky-amor.

Survey @ 2271.4m: 28.48° 130.6Az

SILTY CLAYSTONE: grn/brn-gry/brn, com glauc, tr-rr dissem pyr, sft-disp, blky-amor.

SILTY CLAYSTONE: grn/brn-gry/brn, com glauc, tr-rr dissem pyr, tr micmic, sft-disp, blky-amor.

ARGILLACEOUS SILTSTONE: grn/brn-gry/brn, com glauc, tr-rr dissem pyr, tr micmic, sft-disp, blky-amor.

Survey @ 2300.1m: 28.83° 130.5Az

SANDSTONE: clr-opq, vf-med, tr crs pr srt, ang-sbang, tr glauc, tr dissem pyr, tr micmic, lse, gd inf por, no fluor.

SANDSTONE: clr-opq, med-vf, tr crs pr srt, ang-sbang, occ brn/gry sity mtx, tr glauc, tr dissem pyr, tr micmic, lse, gd inf por, no fluor.

SANDSTONE: clr-opq, med-vf, tr crs pr srt, ang-sbrnd, occ brn/gry sity mtx, tr glauc, tr dissem pyr, lse, gd inf por, no fluor.

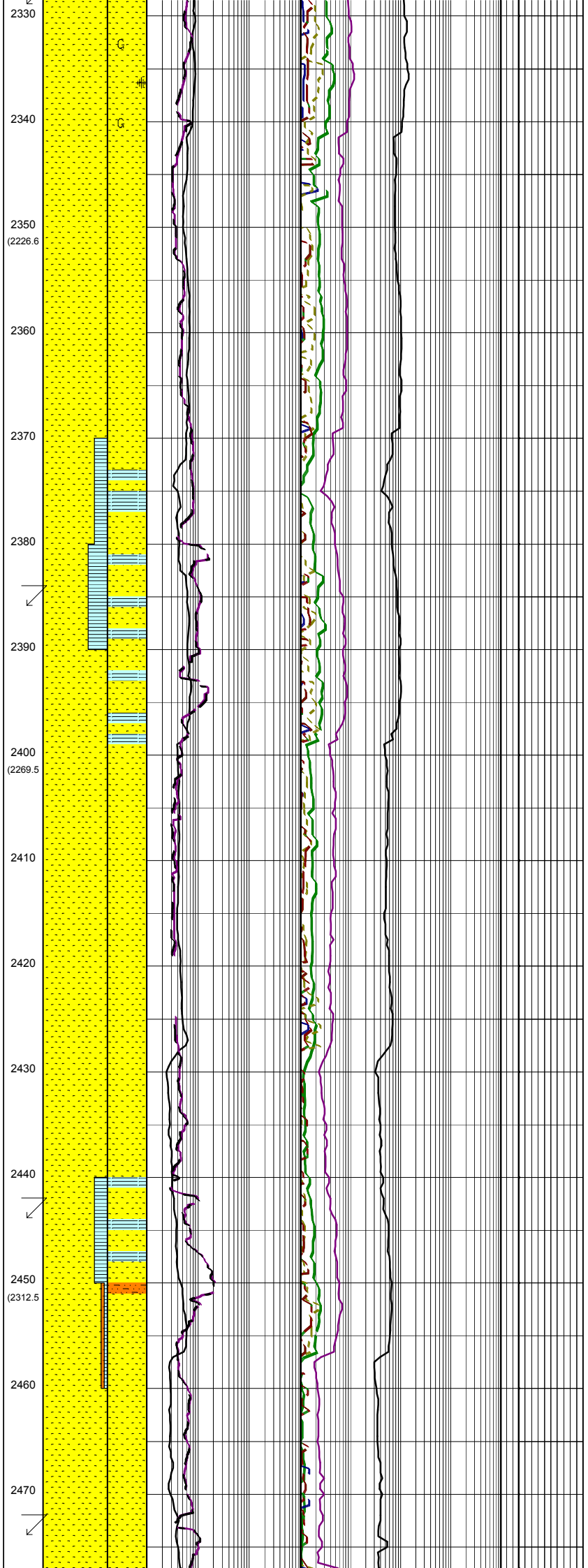
Survey @ 2328.7m: 30.10° 130.3Az

WOB: 10-15 kibs
RPM: 130-140
SPR: 2650-2750 psi
FLW: 900 gpm

16005-06

WOB: 6-14 kibs
RPM: 145
SPR: 2993-3390 psi
FLW: 1000 gpm

MW: 9.5
FV: 76
PV: 21
YP: 43
Gel: 12/19/23
WL: 4.8
Sol: 8
pH: 9.0
Ck: 1
Cl: 43



SANDSTONE: clr-opq, f-med, tr crs, tr vf, mod srt, ang-sbrnd, occ brn/gry slty mtx, tr glauc, tr dissem pyr, lse, gd inf por, no fluor.

Survey @ 2357.5m: 31.19° 129.7Az

SANDSTONE: clr-trnsl, f-med, occ crs, mod srt, sbang-sbrnd, sph-sbsph, sil & pyr cmt, pred cl mtx, occ calc mtx, tr kao mtx, tr-com glauc, lse, gd inf por, no fluor

CLAYSTONE: med gry, occ brn/gry, com glauc, v sft, amor, partly w/out.

Survey @ 2386.4m: 30.97° 129.6Az

SANDSTONE: clr-trnsl, tr med dk gry-dk gry, pred crs-v crs, occ f-med, mod wl srt, sbang-sbrnd, sph-sbsph, tr sil & pyr cmt, tr kao mtx, tr glauc, lse, gd inf por, no fluor.

SANDSTONE: clr-trnsl, f-med, occ crs, mod srt, sbang-sbrnd, sph-sbsph, tr sil & pyr cmt, tr kao mtx, tr glauc, lse, gd inf por, no fluor.

Survey @ 2444.3m: 30.32° 129.7Az

SILTSTONE: brn/gry, tr carb spks, pred fri, occ frm-hd, blk-y-sbbiky.

CLAYSTONE: med dk gry, tr pyr, frm-hd, sbbiky, occ sbfiss.

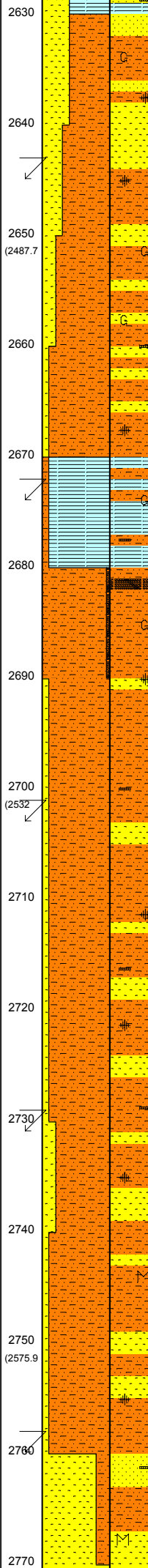
SANDSTONE: clr-trnsl, vf-crs, pr srt, sbang-sbrnd, sph-sbsph, tr sil & pyr cmt, tr kao mtx, tr chl, lse, gd inf por, no fluor.

Survey @ 2473.0m: 29.94° 129.8Az

SANDSTONE: clr-trnsl, vf-f,

WOB:20-24 kilbs
RPM:155
SPP:3100-3300 psi
FLW:960 gpm

WOB:20-28 kilbs
RPM:150
SPP:3040-3060 psi
FLW:918 gpm



2630
2640
2650 (2487.7)
2660
2670
2680
2690
2700 (2532)
2710
2720
2730
2740
2750 (2575.9)
2760
2770

SANDSTONE:clr-opq,f-crs,pr srt, sbang-sbrnd,tr-rr pyr nod,com glauc, tr carb mat,lse,pr inf por,no fluor.

Survey @ 2644.5m: 28.38° 129.1Az

ARGILLACEOUS SILTSTONE:med lt gry-med gry,com glauc, tr pyr nod & dissem,tr carb mat, disp frm,amor-sbbiky.

SANDSTONE:clr-opq,tr-rr trnsi, vf-crs,tr v crs,v pr srt,sbrnd-sbang, tr carb mat,tr glauc,tr pyr nod & dissem,lse,gd inf por,no fluor.

ARGILLACEOUS SILTSTONE:med lt gry-med gry,com glauc, tr pyr nod & dissem,tr carb mat, disp frm,amor-sbbiky.

Survey @ 2676.5m: 27.29° 128.4Az

SILTY CLAYSTONE:lt olv gry- lt gry,tr off wh,tr calc, tr kaol i/p, tr glauc,tr pyr nod & dissem,tr carb mat,disp-sft,amor-sbfiss.

ARGILLACEOUS SILTSTONE: lt olv gry-lt gry,tr-rr dk gry,tr off wh,mnr calc,kaol i/p,tr pyr dissem, tr glauc,sft-frm,tr disp,sbbiky-sbfiss, tr amor.

COAL:olv blk-gry/brn,dll-ea, slty,mod hd-frm,com brit,sbfiss-sbbiky,ang-unevn.

SANDSTONE:opq-clr,f-crs,tr v crs,pr srt,sbrnd-sbang,lse,gd inf por,no fluor.

Survey @ 2702.5m: 27.35° 128.8Az

ARGILLACEOUS SILTSTONE: lt olv gry-lt gry,tr-rr dk gry,tr off wh,mnr calc,kaol i/p,tr pyr nod, tr carb mat,sft-frm,tr disp,sbbiky-sbfiss,tr amor.

SANDSTONE:opq-clr,f-crs,tr v crs,pr srt,sbang-ang,lse,fr inf por,no fluor.

ARGILLACEOUS SILTSTONE: lt olv gry-lt gry,tr off wh, kaol i/p,tr pyr nod, tr carb mat, sft-frm,tr disp,sbbiky-blky, tr amor.

Survey @ 2731.3m: 28.69° 129.1Az

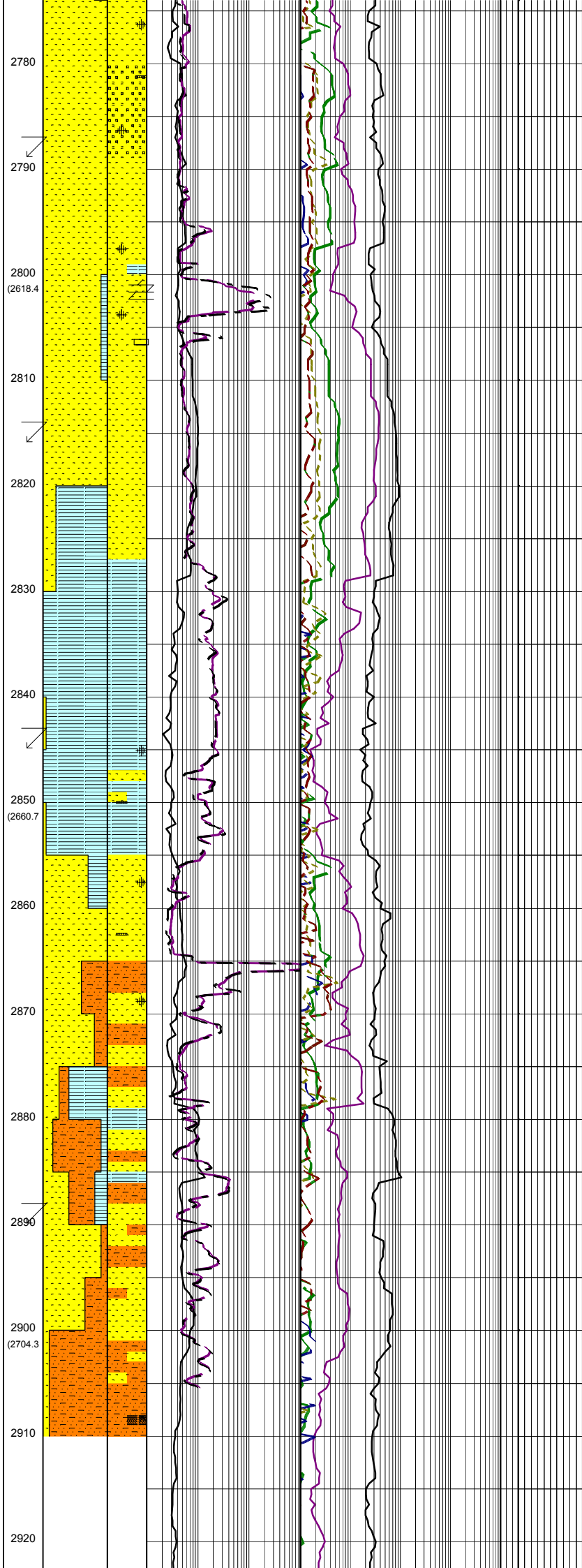
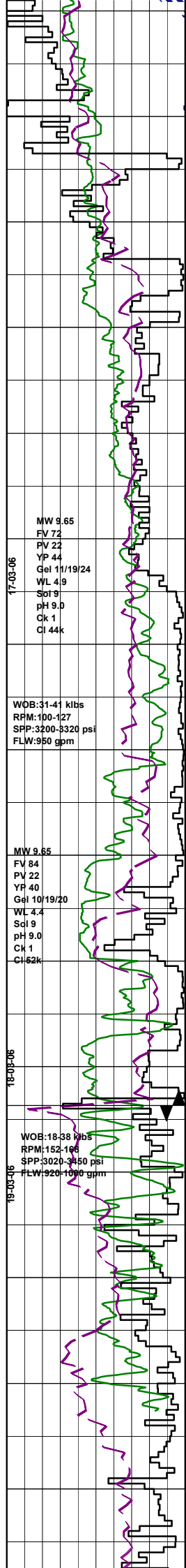
SANDSTONE:opq-clr,f-med, tr crs,pr srt,sbrnd-sbang,lse,gd inf por,no fluor.

ARGILLACEOUS SILTSTONE: lt olv gry-lt gry,tr off wh, kaol i/p,tr pyr nod, tr carb mat, tr mic,sft-frm,tr disp,blky-sbbiky, tr amor.

SANDSTONE:clr-opq,f-med, tr crs, tr vf,pr srt,sbrnd-sbang,lse, gd inf por,no fluor.

Survey @ 2759.9m: 30.71° 130.0Az

SANDSTONE:clr-opq,com trnsi, vf-crs,tr v crs,v pr srt,sbang-sbrnd, tr calc, tr pyr nod, tr mic, tr carb mat,lse,gd inf por, no fluor.



SANDSTONE:clr-opq,com trnsl, vf-crs,com v crs,v pr srt,sbang-sbrnd,tr pyr nod & cmt aggs i/p, lse,tr frm aggs,gd inf por,no fluor.

Survey @ 2788.2m: 33.03° 129.3Az

SANDSTONE:opq-clr,com trnsl, crs-f,com v crs,v pr srt,rnd-sbang, tr ang,tr qtz ovghs,tr pyr nod & cmt aggs,lse,tr frm-mod hd,gd inf por, no fluor.

SANDSTONE:opq-clr,com trnsl, f-crs,tr v crs,v pr srt,rnd-sbang, tr ang,tr qtz ovghs,tr pyr nod & cmt aggs,tr dolo cmt,lse,tr frm-mod hd, gd inf por,no fluor.

Survey @ 2816.4m: 33.18° 128.2Az

CLAYSTONE 1:mott v lt-lt gry,med dk gry,tr silt,calc,rr micfoss,tr carb carb mat,amor-sbbkly,v sft-sft, occ frm.

CLAYSTONE 2:dk gry,sl calc,frm, blkly-spintry,homogen
 Cavings:50mmx10mm in coarse sieve sample.

Survey @ 2845.3m: 31.25° 128.1Az

CLAYSTONE:dk gry-lt gry,com off wh,occ aren i/p,tr calc i/p,tr pyr nod,tr carb mat,frm-sft,tr disp, blkly-sbfiss,tr amor.

SANDSTONE:clr-opq,tr trnsl, f-crs,tr v crs,v pr srt,ang-rnd, tr pyr nod,tr carb mat,tr sil lams, tr qtz ovghs,lse,gd inf por, no fluor.

ARGILLACEOUS SILTSTONE: lt gry-dk gry,tr off wh,tr pyr nod, tr carb mat,frm-sft,tr disp,blkly-sbbkly,tr amor.

SANDSTONE:clr-opq,tr trnsl, f-med,pr srt,sbang-sbrnd,tr rock flour,tr pyr nod,tr carb mat,lse,fr inf por,no fluor.

Rmf 2878m:0.08 ohm @ 26°C

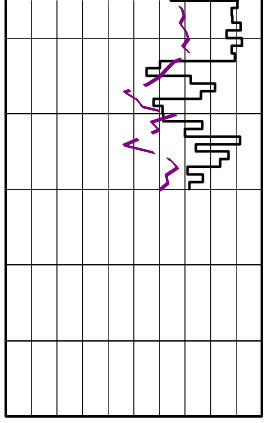
Bit#: SMITH BVCP
 SIZE:311mm (12.25")
 JETS:3x24, 1x16
 IN: 2878m OUT:xxxxm
 RUN:xxxxm HRS:xx.0
 COND:

Survey @ 2890.1m: 29.25° 127.8Az

SILTSTONE:lt gry-lt brn/gry, calc,tr arg,occ aren,tr peld glauc,tr carb mat,v sft-sft, sbbkly-amor.

SANDSTONE:clr-trnsl,med-crs, occ v crs,pr srt,sbang-sbrnd,sph-sbsh,pr pyr cmt,lse, gd inf por,no fluor.

COAL:blk,dll,silty,pyr,frm-brit, blkly-hckly.



2930

2940

2950

